

9-1-2006

## Cost of Funds Determination by Banks in Nigeria

Izundu P. Nwaoba

Follow this and additional works at: <https://dc.cbn.gov.ng/efr>

---

### Recommended Citation

Nwaoba I.P. (2006). Cost of Funds Determination by Banks in Nigeria. Economic and Financial Review, 44 (3), 1-34

This Article is brought to you for free and open access by CBN Institutional Repository. It has been accepted for inclusion in Economic and Financial Review by an authorized editor of CBN Institutional Repository. For more information, please contact [dc@cbn.gov.ng](mailto:dc@cbn.gov.ng).

## Cost of Funds Determination by Banks in Nigeria

---

Peter Izundu Nwaoba\*

---

*This paper articulated the issues involved in the determination of cost of funds by banks in Nigeria. Cost of funds is a major factor in the pricing of loanable funds and exerts much influence on the day-to-day decision of banks on extension of credit either in the inter-bank market or to their customers. The study illustrated how the cost of funds is computed by banks, especially from the 1990s when the interest rate was deregulated. The normal framework for the computation of cost of funds by banks in Nigeria includes interest expense as a percentage of average volume of funds per annum, deposit insurance premium as a percentage of average volume of funds per annum and adjustment for cash reserve deposits, while some banks include overhead costs. Some of the variables considered in the determination of cost of funds included liquidity ratio, money supply and its growth rate, credit risk of borrowers, growth of bank credit, cash reserve requirements, loans-to-deposit ratio, prime lending rate, and real GDP growth rate. Estimation results showed that the significant predictor variables included cash reserve ratio, prime lending rate, real GDP growth rate, growth of bank credit, growth of money supply and liquidity ratio. The paper revealed that high cost of funds is driven by scarcity of loanable funds in the banking system.*

---

**Keywords:** loanable funds, credit risk, loan - deposit ratio, liquidity ratio

**JEL Classification:** G2, G21, E4

**Author's e-mail:** [pinwaoba@cenbank.org](mailto:pinwaoba@cenbank.org)

---

*\* Peter Nwaoba is an Assistant Director in the Research and Statistics Department, Central Bank of Nigeria. He acknowledges the invaluable comments made on the paper by anonymous reviewers, Dr. O. A. Uchendu, Mr. P. J. Obaseki and Mr. Jibrin Musa. Also acknowledged is the encouragement he received from staff of the Financial Analysis Division of the Department. However, all the views expressed in the paper are those of the author and do not represent those of the Central Bank of Nigeria.*

## **I. Introduction**

**C**ost of funds is a critical economic variable in the loanable funds market as it plays a vital role in the mobilization and efficient allocation of financial resources in an economy. Harvey (2003:50) defines cost of funds as simply the interest rate associated with borrowing money. It is the interest cost that a financial institution must bear for the use of money. There is a line of distinction between cost of funds and interest rate. According to Philbeam (1998:46), interest rate is defined as the yearly price charged by a lender to a borrower in order for the borrower to obtain a loan, usually expressed as a percentage of the total amount loaned. It is the price a borrower has to pay to enjoy the use of cash which he does not own, and the return a lender enjoys for deferring his consumption or parting with liquidity. Both cost of funds and interest rate relate to lending and borrowing, and affect the amount of consumption, saving and investment in an economy.

Cost of funds is dependent upon such factors as time value of money, the credit risk of the borrowing bank and inflation rate, among others. Banks generally take risks when they lend to their customers, including other banks, but risk taking differs across banks as some engage in more risks than their capital could bear while others are more prudent. The banks that extend riskier loans assume higher credit risk and may easily be distressed with little mismanagement. In the process of buying and selling money by banks, the price is primarily determined by the cost of funds. The monetary policy of the Central Bank of Nigeria (CBN) influences the availability and cost of money in the economy. The Bank uses its monetary policy instruments to influence the movement of reserves of the banks, which affect the banks in their credit operations and in turn influence the cost and availability of loanable funds.

Public opinion in the past has attributed the slow growth of the industrial and manufacturing sectors to the lending processes of banks in Nigeria, as a result of their high lending rate (usury). The banks have, however, argued that high interest rate is fueled by the rise in the cost of funds at their disposal. They always justify their high lending rates by pointing to the cost of mobilizing funds which they claim to be too high. For instance, before consolidation, more

than 70.0 per cent of the banks' deposits came from the public sector of the economy, necessitating the scramble by banks for government funds, notwithstanding the high deposit rates of 20.0 to 25.0 per cent allegedly demanded by government ministries and agencies that placed such funds.

Furthermore, the banks blamed the upward trend in cost of funds on the failure of the government to honour its obligations under the tripartite agreement on interest rate moderation with the Central Bank of Nigeria and the banks, a situation that allegedly dislocated the envisaged gains from the agreement. This tripartite agreement reached on October 22, 2002 contained a decision to lower interest rates to the point where lending rates should not exceed four per cent above the Minimum Rediscount Rate (MRR), now replaced with the Monetary Policy Rate (MPR) in December 2006. The quantity, quality, cost and availability of loanable funds have continued to constrain the expansion of businesses in Nigeria, reflecting the small size and weak capital base of most of the banks as well as high cost of funds for extension of credit. For example, most of the banks that were supposed to drive financial intermediation in Nigeria were rated marginal and weak, resulting in less financial deepening in the financial sector and necessitating the banking sector reforms which commenced on July 6, 2004. Giving the background to the banking sector reforms in Nigeria, Soludo (2004:5) highlighted poor credit policies and administration, high incidence of delinquent loans and ethical standards as well as undercapitalization/insolvency and illiquidity as some of the major problems within the banking industry, with obvious implications on the state of banking sector soundness. These factors were driving the cost of funds at the inter-bank lending market before the commencement of the banking sector consolidation. Efforts by the Central Bank at ensuring safe and sound banking practices that would safeguard depositors' funds, therefore, made it very imperative to beef up standard capital adequacy requirements for the banks to encourage them to maintain a certain level of net worth by shoring up their shareholders' fund to a minimum of ₦25.0 billion with effect from January 1, 2006. The current high interest rate regime in the economy remains a source of concern both to policy makers, the regulators, the banks and to the ultimate fund users in the economy as it runs counter to the objectives of banking sector consolidation.

Outside the framework set by the Central Bank of Nigeria on what constitutes the cost of funds in its monetary policy guidelines, borrowers always complain that most banks are not transparent in their computation of cost of funds, hence the high interest rates charged to customers. According to the borrowers, the customer is always accosted with high lending rate which the banks attributed to high cost of funds, while the methodology used to arrive at the cost of funds remained a mystery and exploitative to the borrowers. The argument of excessive hedging by the banks becomes very overwhelming. It is, therefore, imperative that an understanding of the critical factors that drive these costs and their transmission dynamics be understood as a first step to reducing high interest rates.

This paper articulates the issues involved in the determination of cost of funds by banks in Nigeria, highlights the items considered by banks and the processes involved in the calculations, and analyses the data in order to ascertain the critical factors that affect cost of funds in the Nigerian banking system. It also assesses the level of compliance with the relevant policy on interest rate and by extension cost of funds, and makes recommendations for policy options that would influence the reduction of interest rate within the economy. The paper uses both descriptive and empirical analysis which covers the deregulation period, especially from the 1990s when the interest rate was fully deregulated up to 2005.

For analytical purposes, the rest of the paper is structured into four parts. Part II looks at the theoretical issues and reviews the literature on cost of funds. Part III illustrates the approaches for the computation of cost of funds by banks. Part IV presents some analysis and the summary of findings, while Part V proffers some recommendations for policy options and concludes the paper.

## **II. Theoretical Issues and Review of Literature**

The loanable funds theory of the rate of interest developed by Knut Wicksell, a Swedish Economist, in 1898 has been central to the theory of cost of funds and interest rates. According to Philbeam (1998:57), the loanable funds approach views the interest rate as being determined by the supply and demand for

loanable funds in the capital markets. The theory posits that investments and savings determine the long-term level of interest rates, whereas short-term rates are determined by financial and monetary conditions in the economy. It revealed that the intersection of the supply and demand for loanable funds determines the interest rate, and by extension cost of funds, while the equilibrium interest rate is such that it clears both the money market and the loanable funds market. The increase in the supply of loanable funds necessitates downward trend in cost of funds and interest rate, all other things being equal. On the other hand, the increase in the demand for loanable funds exerts pressure on the available loanable funds resulting in a rise in cost of funds and interest rate.

Fisher (1930:16/17) stressed that at the economy level, the rise in the income level increases the level of savings, which in turn increases the quantum of loanable funds. However, economic agents could take more debts because of increase in expected future income. Also, an increase in the proportion of savings held in the form of interest earning assets compared to non-interest earning assets, resulting from better financial intermediation, could lead to an increase in the supply of loanable funds. Stiglitz (2001:4) noted that capital adequacy standards may induce the banks to engage in riskier behaviour as they seek returns to offset their higher costs. He argued that the level of capital adequacy that is high enough to ensure that banks will not engage in gambling behavior entails a cost; and because capital is expensive, banks are only able to pay depositors relatively low interest rates, which he equated to lowering their marginal return to deposits. The banks' risky behavior seems to be higher during economic deregulation and liberalization when economic activities are very high and dynamic, and bank capital is found to be inadequate. Stiglitz further noted that the published capital-to-asset ratios of banks are, therefore, frequently overstated by officials of banks that are anxious to conceal bad loans.

Comparatively, Angbazo and Saunders (1997) found that the cost of funds to large banks increased after Federal Deposit Insurance Corporation Improvement Act (FDICIA) of 1991 was implemented in the United States, suggesting that bank creditors believed that the Act reduced the likelihood of a

large bank benefiting from the “too-big-to-fail” policy which was perceived from the congressional testimony of the Comptroller of the Currency in September 1984. Its counterpart in the country, the Nigeria Deposit Insurance Corporation (NDIC) Act was promulgated under the laws of the Federation of Nigeria 1990 for the purpose of insuring deposit liabilities of licensed banks and some other financial institutions in Nigeria. The NDIC premium, which is about 0.94% (15/16 of 1%) of total deposits of a bank, forms part of the computable items used to arrive at the total cost of funds of banks in Nigeria.

Keynes (1936) identified two sets of services performed by the modern banker, namely, supplying a substitute for state money by acting as a clearing house and transferring current payments backwards and forwards between different customers by means of book entries on the credit and debit sides. The banker also acts as a middleman in a particular type of lending, receiving deposits from the public which he employs in purchasing securities, or making loans to individuals, industry and trade, mainly to meet the demand for working capital. Following from the view of Keynes and under the inter-bank lending arrangement, the banks borrow funds, usually on short-term basis, from among themselves and also from the central bank depending on the ruling cost of funds. The borrowers of the funds from the banks in turn pay liquidity premium to the banks to induce them to lend long, and the size of the liquidity premium increases with the time to maturity of the loan.

In line with the arguments of Drury (2000: 456) and Mouck (1997:3), banks lend to customers who invest the money in projects that yield return in excess of the opportunity cost of the investment; where opportunity cost of the investment is also known as either the minimum required rate of return, cost of capital, discount rate or interest rate. Drury had argued that a firm should operate at a point where marginal cost is equal to marginal revenue, and marginal cost is represented by the marginal cost of capital normally used to finance projects. The study by Mouck, on the other hand, highlighted the fact that firms produce goods and services at the lowest possible cost while maximizing profits.

However, Brock (2000:74-75) observed that banks find it difficult to monitor

their borrowers, while deficient internal controls on both initial and on-going loan evaluations lure banks to lend even in circumstances in which repayment seems unlikely. Brock further observed that bank managers sometimes resort to accounting gimmicks such as double-gearing, whereby a bank lends money to a firm within its group so that the firm can buy an equivalent amount of the bank's stocks. The bank's reported capital rises by that amount, but the group's capital remains the same, with consequences for financial sector soundness and stability. Proposals have also been made to incorporate exchange rate movements in measures of the cost of capital. Oxelheim (1985:210) noted that the weighted average cost of capital includes the cost of borrowing from overseas and has its net cost adjusted for anticipated exchange rate movements. This approach acknowledges that borrowing in a foreign currency may produce a gain as the cost of funds declines with depreciation of that foreign currency.

Monetary policy is one of the two principal means (the other being fiscal policy) by which governments in a market economy regularly influence the direction of overall economic activity. It is a central bank's mandate to influence the availability and cost of money and credit in an economy. Apart from the open market operations in the money market by the CBN, occasioned by the need to achieve a desired level of money supply in the economy and also raise money for development purposes (as mostly experienced in the less developed countries), the CBN lends to the banks that wish to borrow money from it at its lending rate (the MRR), now replaced with the Monetary Policy Rate (MPR). The banks, on their part, are expected by the Banks and Other Financial Institutions Act 1991 (as prescribed in section 13) to maintain minimum cash reserves ratio against unexpected withdrawals (BOFIA, 1991:5). The banks of course resort to borrowing from the Central Bank when they run below such stipulated ratio. They raise their own cost of funds and interest rates in line with the Central Bank lending rate, and also hold more cash reserves when CBN rate increases.

Reserve requirements that emanate from central bank's change of policy affect monetary and financial conditions. A reduction in the reserve requirement increases the quantum of cash held by the banks and, therefore, makes more



funds available for extension of credit to investors. In the traditional Keynesian view, a fall in money supply will result to a rise in interest rates and high cost of capital leading to a decline in investment spending. Ajayi (2001:8) stressed that a change in policy leads to a change in money supply; and for a given money demand, this leads to changes in market interest rates and in bank loan rates for borrowers which may affect investment decisions, and changes in deposit rates which may affect the choice between present and future consumption. He stated that changes in interest rate affect not only the cost of credit but also the cash flows of debtors and creditors, as well as alter the marginal cost of borrowing leading to changes in investment and saving and, thus, aggregate demand.

Interest rates were fully deregulated in Nigeria in 1990 and banks thereafter, set their costs of credit and costs of funds according to market forces. Ndekwe (1993:48) revealed that the three arguments put up to justify this favourable behaviour towards market forces include that of the real rate of interest (nominal rate must sufficiently adjust for the rate of inflation), that of tight monetary policy (growth of credit and money supply is restricted) and the money market behavior (pressure on inter-bank funds in the market pushes up interest rates). In his keynote address at the Tenth Annual Conference of the Institute of Bankers of Nigeria in 2004, Olusegun Obasanjo urged the banks to bring down their rates and costs and be specific in their charges rather than hedging with “administrative, ledger, legal and book-keeping charges that are annoying, inhuman, criminal, anti-growth and anti-development”. He noted that banks put up all sorts of arguments and provide several technical rationalizations and justifications for high double-digit interest rate, which stifles creativity, discourages investments (especially the development of small and medium scale enterprises), suffocates businesses and intimidates the ordinary person in a developing nation like Nigeria (Obasanjo, 2004).

Obasanjo's view was at the heels of the persistent complaints of the Manufacturers Association of Nigeria (MAN) about very high interest rates charged by the banks and the maturity pattern of the loan facility extended to their members, where they are expected to repay the loans within 90 days as if they are traders. MAN had argued that the conversion cycle of raw materials to

money is within seven months range which does not give any comfort for a 90-day loan facility. As expected, the banks argued that the prevailing high interest rates were the direct effects of the rising cost of funds in the financial market as well as inflation rate.

The expected rate of inflation also plays a crucial role in the determination of cost of funds and interest rate, especially the real interest rate represented by the Fisher equation:  $r = i + pe$ . Harvey (1986:1) pointed out that this development is due to the fact that lenders of funds require positive real expected returns (not just expected returns) from lending their funds while borrowers pay positive real cost for access to loanable funds. Investors, therefore, find it uneconomical to lend money at less than the expected rate of inflation since changes in expectations about inflation have a significant influence on the rate of interest.

The ability to pay the agreed interest rate is usually one of the conditions of inter-bank lending. This is because a banker borrows money with an obligation to repay on demand or after an agreed period; and he lends funds (extends credit) with an obligation on the part of the borrower to repay under stipulated terms and conditions which include the maturity period. The banker, therefore, borrows money and lends money or extends credit if and when these terms and conditions are mutually acceptable and fulfilled. The cost of funds to a borrowing bank, therefore, depends on such terms as the duration of the loan (maturity period), risk assessment of the borrower and the expected rate of return from yields on treasury bills or bonds.

Cost of funds is, therefore, affected by the expected level of default risk, that is, the risk that the borrower or an issuer of debt securities will default on all or part of the commitments in the loan contract. Agene (1995:47) stated that the cost of obtaining liquidity is a function of market conditions and the degree of risk, (both interest rate and credit risks), which are reflected in the balance sheet of the banks. A bank can still be over-exposed in terms of risk arising from excessive lending of funds or booking of credit, notwithstanding the level of its capital base. The distress phenomenon experienced by banks in the first half of the 1990s was largely due to this factor. A larger percentage of Nigerian

borrowers, including banks, are prone to loan default while the sanction for such act is not stiff enough to deter them. Linked to credit risk is the degree of liquidity and duration of the loan. These factors also determine the rate to be charged by investors of funds because the less liquid the security or collateral, the higher the charge to the borrowing agency, while a longer duration implies higher risk that also attracts higher charges. On the other hand, higher credit rating of an economic agent gives it an advantage to borrow funds at a relatively lower charge.

For a bank, cost of regulation consists of opportunity and operating costs that arise from the activities or changes in activities that are required by regulation (Ellienhausen, 1998:2). Opportunity costs could occur for a bank when a regulation prevents it from engaging in profitable activity. Another opportunity cost is the interest forgone as a result of the prohibition on investing reserves in interest-bearing assets. As cited by Ellienhausen and using a similar cost accounting methodology to estimate the operating costs at banks in the US, Darnell (1980), Mckinsey & company (1992) and Grant (1992b) studied the regulatory costs of banks in three categories namely direct labour cost, other direct cost and overhead expenses.

Darnell estimated that a bank's operating costs in 1979 represented 13.7 percent of its total non-interest expenses, of which its cost of complying with consumer regulations alone was 5.9 percent of non-interest expense. Mckinsey & company in 1991 studied incremental ongoing regulatory costs at four large commercial banks covered by deposit insurance and estimated that the average cost of complying with all sixty regulations was 6.1 percent of non-interest expenses, of which the most costly was deposit insurance estimated at 4.1 percent of non-interest expenses. The average cost of complying with consumer regulations was 0.8 percent of non-interest expense. Grant Thornton, studying nine banks in 1991 estimated that regulation costs averaged 14.2 percent of non-interest expenses, of which consumer regulation cost was 8.6 percent of non-interest expenses. The three studies revealed that consumer regulations are especially costly for all banks.

In all cases, therefore, the various factors determining the cost of funds would

include the demand and supply of loanable funds; inflation rate; inflation expectations; inter-bank funds rate; risk perceptions; the creditworthiness of the borrower; savings rate; the prevailing lending rate; maturity period; cash reserve requirements for banks; liquidity ratio; minimum rediscount rate (monetary policy rate); growth of bank credit to the economy; growth of money supply; the credibility of the government's macroeconomic policy; the capital base of the financial intermediaries; the interaction between fiscal and monetary policies; the rate of economic growth; political factors; economic agents' perception about future and overheads, as well as international factors like the interest rates in the rest of the world and the exchange rate regime adopted by the country concerned.

### **III. Approaches for Computing Cost of Funds**

Cost of funds computation includes the interest expense divided by the volume of the interest bearing liabilities, while the cost of new debt capital is simply the after tax interest cost of raising new debt. Oyedotun (2002:4) stressed that the marginal cost of debt is a measure of the borrowing cost paid to acquire one additional unit of investible funds. The marginal cost of equity capital, on the other hand, is a measure of the minimum acceptable rate of return required by the shareholders. Therefore, the marginal cost of debt and equity constitute the marginal cost of funds either as an independent source of funds or a pool of funds. The higher the interest rate, the higher the bank's cost of funds, hence the positive correlation between interest rate and a bank's cost of funds. Companies, including banks, are often financed by a combination of debt and equity capital, and they always aim to maintain target proportions of these debt and equity. The overall cost of capital for the company is, therefore, calculated as:

$$(\text{Proportion of debt capital} \times \text{cost of debt capital}) + (\text{proportion of equity capital} \times \text{cost of equity capital})$$

The overall cost of capital is also called the weighted average cost of capital (Drury, 2000:509). According to the Central Bank of Nigeria, the banks are expected to employ this weighted average cost of funds computation

framework for determining their cost of funds beginning from 2002 in line with international banking practice. Thus, the former simple average method of computing cost of funds was discontinued. Ordinarily for the banks, the ratio of the naira amount paid as interest in a particular month to the average naira amount of the funds for that month constitutes the weighted average cost of funds ratio for that month.

The cost items in the CBN framework include banks' interest cost on the different types of deposit liabilities, borrowings from the inter-bank funds market, payments in respect of deposit insurance premium and cost due to reserve requirement; while overhead costs are excluded in the framework (CBN, 2004:17). Therefore, the CBN computation of the banks' effective average cost of funds focuses on interest expense as percentage of average volume of funds per annum; deposit insurance premium as percentage of average volume of funds per annum; and adjustments for cash reserve deposits (Table 1). Overhead costs were excluded from the CBN framework because banks are known to have other non-interest income sources that, in most cases, account for substantial part of the total income which should be used to take care of other operating or non-interest expenses. However, the banks endeavoured to apply the CBN framework but not without some elements of hedging, which brings so many factors into consideration in the calculation of their cost of funds. The issue of hedging and the continued inclusion of overhead costs by some banks, which was excluded by the Central Bank, still constitute a problem in the computation of cost of funds by Nigerian banks (Table 1).

The cost item in the framework of a typical bank in Nigeria, therefore, includes the following: current liabilities such as commercial paper rediscounted, bankers' acceptances rediscounted and treasury bills rediscounted, inter-bank takings, as well as current and savings accounts deposits, fixed deposits and bank certificates in the form of unique products of the bank that customers invest in. Other considerations include cost of energy generation, currency movement, currency sorting, public relations and stationeries. Also, expenses incurred on payment of salaries and general maintenance of the banks' fixed assets which form the bulk of the overhead costs that the CBN directed should

be excluded from the computation of a bank's cost of funds. These are incurred as operating expenses, which are eventually added to the following to arrive at the total cost of funds:

- (i) NDIC premium: (15/16 of 1% of total deposits of the bank, i.e. 0.94%),
- (ii) some percentage of cash reserve, and
- (iii) some percentage of other liquid assets

It is expected that pre and post-merger costs as well as consolidation and post-consolidation costs will now form part of the framework for the calculation of cost of funds by banks in Nigeria. As stated in Table 1, the computation of cost of funds of banks in Nigeria, at any given moment, would involve the aggregate volume of all its deposits and other funds, interest expense, deposit insurance premium, and adjustment for cash reserve deposits. However, the aggregate cost of funds of banks could vary due to concentration of deposits in different products within banks. Ratnayake (2004:4) observed that some banks have the ability to canvass low cost funds more easily than others due to certain advantages they have in providing solutions for customer needs. Any advantage gained by a bank in low cost funds, therefore, contributes to its profit either directly or by leveraging through other business deals.

### **Deposit Insurance Premium**

Deposit insurance protects the payment system from disruption. It is an anchor for public confidence in the banking system. That is, because a portion of deposits are guaranteed, depositors need not rush to the bank to withdraw funds if the bank's capacity to cover them becomes questionable. It is intended to prevent the financial instability associated with runs on banks that can bring down even sound institutions. Under deposit insurance, banks issue a class of liabilities for which most balances, especially for the small depositors, are fully insured by the Nigeria Deposit Insurance Corporation (NDIC) up to the sum of ₦50,000.00. The deposit insurance separates the depositor from the credit risks of the bank which are assumed by the NDIC. In essence, when a

bank issues a deposit, it engages in two transactions: it issues a risk-free (government insured) liability to a depositor and it purchases an insurance contract from the deposit insurance corporation to cover the credit risks associated with the priority position of the deposit claim (Hutchison, 2005:3).

The costs of deposit insurance are paid from insurance premiums, which are passed on to the banking system and the banks in turn include them in their computation of cost of funds. The premium for the purchase of insurance contract from the NDIC is currently 15/16 of 1% of total deposits of a bank. The four representative banks posted deposit insurance premium of 0.5%, 0.9%, 0.9% and 0.7%, respectively.

**Table 1: Framework for Computation of Cost of Funds by Banks in Nigeria**

S/N	Details	Bank A	(%)	Bank B	(%)	Bank C	%	Bank D	%
1.	Volume of deposits and other funds i.e. average of opening and closing balances (₦Million)	80,041.7		79,948.5		139,623.0		51,241.3	
2.	Interest expense for the month (₦ Million)	171.3		639.5		881.4		68.6	
3.	Deposit Insurance premium payable during the month (₦Million)	34.4		61.6		109.1		29.7	
4.	Overhead cost of funds in the month (₦ Million)	354.0		856.8		-		142.5	
5.	Interest expense (2) as a percentage of average volume of funds per annum		2.6		9.6		7.6		1.6
6.	Deposit insurance premium (3) as percentage of average volume of funds per annum		0.5		0.9		0.9		0.7
7.	Overhead cost (4) as percentage of average volume of funds in the months per annum		5.3		12.9		-		3.3
8.	Average cost of funds in percentage per annum (5+6+7)		8.4		23.4		8.5		5.6
9.	Adjustment for cash reserve deposits		1.0		0.9		3.1		0.1
10.	Effective average cost of funds (8+9)		9.4		24.3		11.6		5.7

Source: Banking Analysis System (Monthly Returns by Banks)



## **Overhead Costs**

High cost of funds and overhead costs make pricing by banks costly. Banks endeavour to recover their annual overhead expenditure from business every year since they are of recurrent nature. Banks can achieve cuts in overhead by aggressively targeting “other non-interest expense”. This category includes a host of costs such as advertising costs, data processing services, software development costs, certain legal fees, branch networking, information technology and auditing. A bank with small capital and small branch network will present a higher cost of funds since it has to attract high end deposits due to lack of a large branch network with low overheads. Thus, there will be a trade-off between high cost deposits and low overheads. Overhead costs for banks A, B and D in the representative table amounted to ₦354.0 million, ₦856.0 million and ₦142.0 million, respectively, while bank C did not include it in accordance with the Central Bank's directives. The high overhead cost posted by bank B with volume of deposits and other funds of ₦79,948.5 million shows that the bank is either rendering spurious returns to the Central Bank or there is an element of mismanagement.

## **Cash Reserve Requirements and Adjustments**

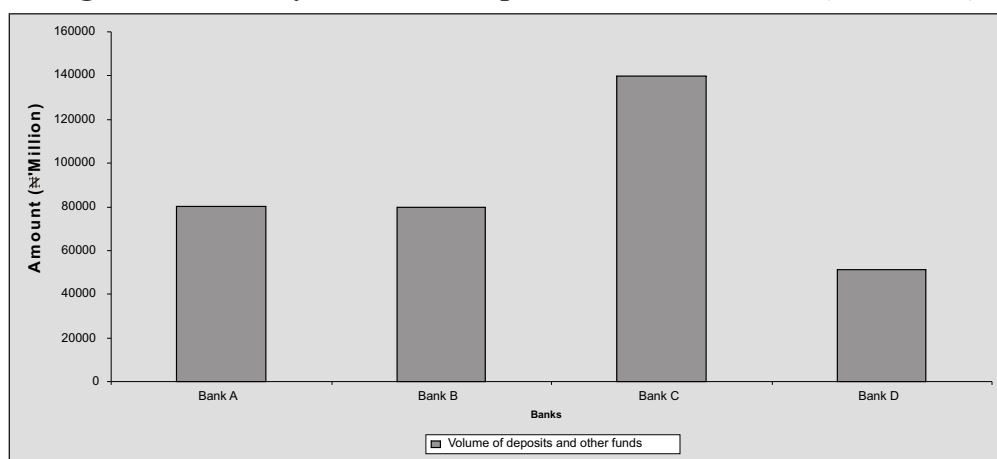
Reserve requirements are one of the three main tools of monetary policy set by the Central Bank and used in influencing how much money banks can lend, thus setting the pace at which the nation's money supply and economy can grow. The other two tools are open market operations (OMO) and discount rate. They provide one of the monetary adjustment tools the Central Bank employs to regulate the supply of credit in the banking system. Cash reserve requirements relate to the amount of funds that banks must hold in reserves against deposits made by their customers. These are computed as percentage of deposits that banks must hold as vault cash or deposit at the Central Bank. Cash reserve requirements represent a cost to the banking system because they represent a portion of deposits that banks may not lend. They impose a cost on the banks equal to the forgone interest on the amount by which required reserves exceed the reserves that banks would voluntarily hold in order to conduct their business. As at December 2005, cash reserve requirement (CRR) for banks in Nigeria was 10%.



Reserve adjustments allow for the effects of changes in reserve requirements on a bank's deposits and for changes in the proportion of deposits subject to different reserve requirements. The Central Bank can stimulate or tighten available bank credit and the ability of banks to lend by raising or lowering the amount of required reserves. Thus, the inclusion of adjustment for cash reserve deposits in the framework for the computation of cost of funds.

Further analysis of the representative table derived from the returns of four deposit money banks (Table 1) showed that bank C complied with the Central Bank's directive of excluding overheads from the computation of cost of funds. It reported the highest deposit liabilities that may be more realistic (Figure 1). This may reflect the credibility of the Management of the bank. The bank reported interest expenses as a percentage of average volume of funds per annum of 7.6%.

**Figure 1: Monthly Volume of Deposits and other Funds ( ₦'Million)**



Banks A, B and D that included overheads in violation of the Central Bank's directive, reported interest expenses as a percentage of average volume of funds per annum of 2.6, 9.6 and 1.6%, respectively, while their overheads as a percentage of average volume of funds in the months per annum were 5.3, 12.9 and 3.3%, respectively. Analysis also indicated that bank B posted the highest overheads as a percentage of average volume of funds in the months per annum of 12.9% and the highest effective average cost of funds of 24.3% during the

review month. This development was a direct result of very high overhead cost of funds when compared with banks A and C. Bank B's overhead costs, therefore, accounted for more than half of its average cost of funds and effective average cost of funds (Figures 2 and 3).

Figure 2: Monthly Cost of Funds by Banks in Nigeria ( ₦'Million)

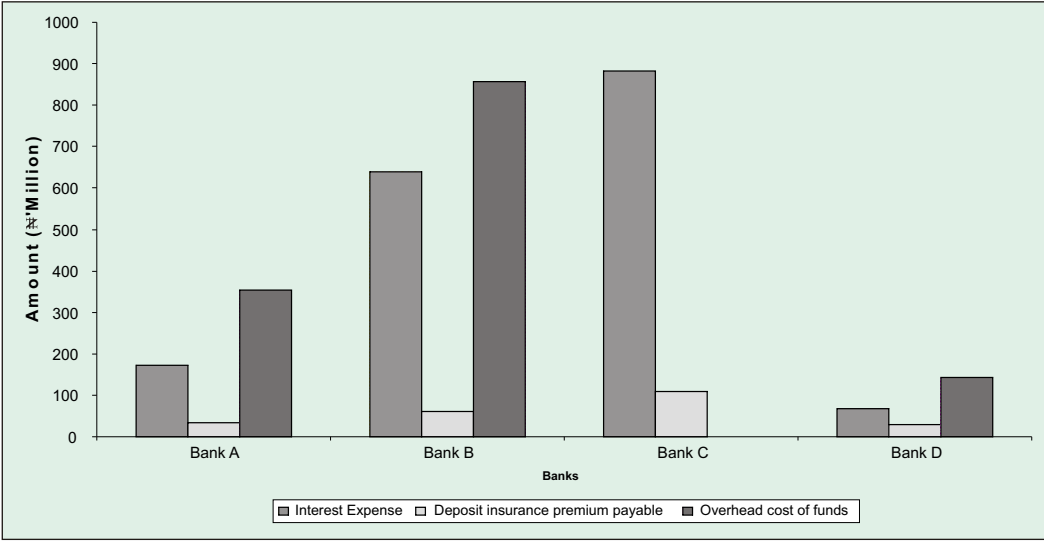
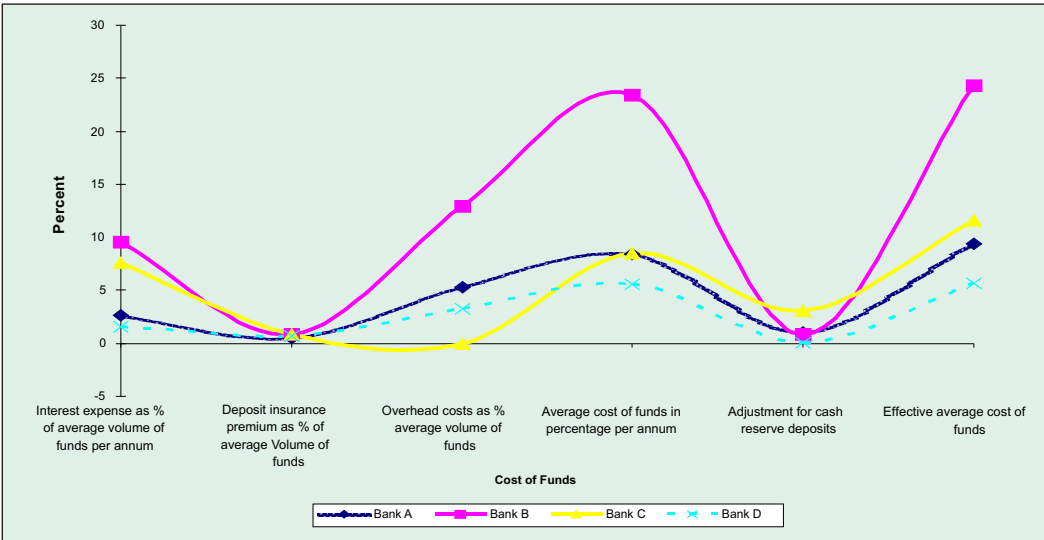


Figure 3: Cost of Funds of Selected Banks in Nigeria (%)



The effective cost of funds for the four banks averaged 12.8% while it averaged 8.9% for the three banks (A, C & D) with moderate overhead costs. This illustration revealed that cost of operations has a significance influence in the computation of lending interest rates by banks in Nigeria<sup>3</sup>. The banks' argument have, however, been strong that the high interest rate they charge (ranging between 17.5-26.4%) is a function of high cost of funds and general business environment in Nigeria. They further argued that facilitating single digit, production-friendly lending rates, would obviously imply addressing effectively issues relating to infrastructural deficiencies, with their direct impact on cost of fuel and energy, and by extension general price increases in the economy.

#### **IV. Empirical Analysis of Determinants of Cost of Funds**

In order to ascertain the impact of factors that determine the cost of funds of banks in Nigeria, a regression model was developed and estimated. Information was obtained on the relevant economic indicators for the period 1986 to 2005 (Tables 2 and 3). From the literature, cost of funds determination is influenced by such factors as inflation rate; inter-bank funds rate; creditworthiness or risk of the borrower; savings rate; maturity period; cash reserve requirements for banks; liquidity ratio; minimum rediscount rate; growth of bank credit to the economy; growth of money supply; the rate of economic growth; loan-deposit ratio of banks; prime lending rate; treasury bills rate; and overheads. It is globally acknowledged that funding gap has been a major impediment to investment and general economic growth in developing economies. Also, in most cases, where funds exist, it is always at very high and unattractive interest rates. Therefore, it is imperative to understand the determinants of cost of funds in the Nigerian banking system.

##### **IV.1 Major Findings**

The following variables found to be consistent with the assumptions of the

---

<sup>3</sup> *The banks have not been named in order to maintain confidentiality and anonymity as well as to prevent any unintended imputations into their operations.*

error term were modeled. There are no identifiable proxies for credit worthiness or risk of borrower and overheads. Thus,

$$\text{Cof} = f(\text{Crr}, \text{Plr}, \text{Rggr}, \text{Ldr}, \text{Gbcr}, \text{Gms}, \text{Lr}) \dots \dots \dots (4.1)$$

Where,

Cof = Cost of funds

Crr = Cash reserve ratio

Plr = Prime lending rate

Rggr = Real GDP growth rate

Ldr = Loans/deposit ratio

Gbcr = Growth of bank credit

Lr = Liquidity ratio

Gms = Growth of money supply

$$\text{Cof} = \alpha_0 + \alpha_1 \text{Crr} + \alpha_2 \text{Plr} + \alpha_3 \text{Rggr} + \alpha_4 \text{Ldr} + \alpha_5 \text{Gbcr} + \alpha_6 \text{GMS} + \alpha_7 \text{Lr} + \mu_t \dots \dots \dots (4.2)$$

$$\alpha_1, \alpha_2, \alpha_3, \alpha_7 > 0; \quad \alpha_4, \alpha_5, \alpha_6 < 0$$

$\mu_t$  is assumed to have zero mean and constant variance.

Using the ordinary least square (OLS) technique, estimates of the parameters in equation (4.2) were obtained. All the tests were carried out at the 5 and 10 per cent levels of significance. Forty-eight (48) high frequency monthly data from the Central Bank of Nigeria were used for this analysis (Table 2). The results are as shown and interpreted below.

## IV.2 Interpretation of Regression Results and Summary of Findings

Dependent Variable	Independent Variables								Statistic				
	C	CRR	PLR	RGGR	LDR	GBCR	GMS	LR	R <sup>2</sup>	$\bar{R}^2$	F	Pr (F)	DW
COF	74.4 (1.2)	13.7 (3.8)	-9.5 (-6.0)	-6.4 (-5.9)	-0.6 (-1.3)	0.7 (4.1)	-0.9 (-3.3)	2.1 (3.8)	61	55	9.0	0.00	2.1

Values in parenthesis represent the t-values.

The explanatory variables specified in the model accounted for 55% of the observed variability in the cost of funds by banks in Nigeria. The Durbin Watson statistics for the model of 2.1 suggested the absence of serial correlation in the disturbances. The cash reserve ratio (CRR) was significant and with the right sign. This revealed that the more banks' funds that are kept with CBN to meet cash reserve requirement, the higher the average cost of fund. This is responsible for the continuous downward adjustment in cash reserve ratio as this will reduce lending rate for the investing public, promote lending to the real sector and reduce cost of funds. Similarly, the growth of bank credit was also significant and complied with the economic a priori expectations. The variable came out with positive sign and was also significant at 5 %. The implication of this is that banks should ensure efficient use of resources both material and human in the expansion of service delivery.

Upward trend in the growth of money supply rightly revealed that such variation will impact negatively on the average cost of funds, because interest rate which is a large component of cost of funds would likely decline. In this context, the growth of money supply came out significant and also with the right sign. In order to meet the liquidity ratio when liquidity shortage exists, the average cost of funds will increase. Also, since liquidity ratio is an implicit tax, it has the tendency of raising the cost of funds. During the period of distress borrowings, banks mobilize cash by offering excessively high interest rates which accentuate the problem of capital erosion. In addition, they were able to achieve the required minimum liquidity ratio by offering unrealistic deposit rates. The prime lending rate was significant and had a negative sign, indicating that increases in prime lending rate will reduce the average cost of funds. Similarly, real GDP growth rate was significant and had a negative sign which shows that as real GDP growth increases, the average cost of funds in Nigeria reduces.

### **IV.3 Policy Implications**

Average cost of funds which, according to deposit money banks, comprise both interest rate expenses and administrative expenses, is a major indicator of efficient performance of the banking sector. When the average cost of funds is

on the high side, it adversely affects bank charges and efficient allocation of resources in the economy. It is for this reason that the Central Bank of Nigeria, through its monetary policy circular, directed that the deposit money banks should not include overhead costs as part of their costs of funds.

Using the arithmetic or weighted average method for computing cost of funds provided a range of 8.9% - 12.8%. Empirical analysis of the cost of funds showed that the major factors in the weighted average approach - CRR, PLR and LR - were statistically significant using a time series model. The empirical evidence shows that there is need for the CBN to constantly adjust the CRR downwards in order to reduce the cost of funds and enable banks to charge lower lending rates for the investing public.

Growth in money supply reduces average cost of funds. This, notwithstanding, the CBN should continue to pursue its restrictive monetary policy stance to fend off inflation arising from excessive growth in money supply. When the economy becomes stable, cost of funds also becomes predictable and reasonable. The positive sign of the liquidity ratio reveals that the higher the liquidity ratio, the higher the average cost of funds. Banks should be encouraged to strike a balance between profitability and liquidity. The desire to achieve this requires the CBN to fast-track its campaign and measures to improve the payments system and use of non-cash instruments.

## **V. Recommendations, Summary and Conclusion**

### **V.1 Recommendations**

Cost of funds is dependent upon the credit risk of the borrower among other factors. Credit risk is a major consideration in extending loans to investors, but sanctions for loan defaults are weak. The legal clause for loan default which gives undue advantage to defaulting borrowers should be reviewed for possible strengthening. Such laws should state a time frame for the disposal of related cases because prolonged litigations, at the instance of borrowers, usually stall the process of take-over and consequent auctioning of borrowers' collaterals by banks in the banks' effort to recover their money. The failed bank law should be strengthened and enforced so that borrowers are immediately

brought to book and lenders do not suffer unduly in the hands of loan defaulting borrowers. The CBN should work in conjunction with the National Assembly to enact a law that will aim at the dual objectives of making it difficult for beneficiaries of credit to default and easy for the lenders to recover bad loans. The present effort at strengthening and invoking the law on dud cheques is also a welcome development. A strong legal framework on loan default should follow as it would have the positive effect of reducing credit risk and thereby reducing cost of funds and in fact interest rates.

Generally, lack of adequate infrastructure makes the general business environment in Nigeria very un-conducive. The weak energy sector is a problem for banks and other businesses that depend on electricity to operate their numerous information technology (IT) systems. It also encourages high tariff regime in the telecommunication sector which the banks need for effective and efficient undertaking and confirmation of transactions. This deficiency necessitates the use of alternative energy sources with high cost of fuel, which reflects in their cost of funds and interest rate charges. Government should double its efforts in addressing the problem of infrastructure deficiencies which banks try to solve by themselves. Essentially, Government should, effectively provide constant energy supply that would reduce the cost of doing business in Nigeria, and by implication reduce average cost of funds charged by the deposit money banks.

The CBN should continue to influence the movement of interest rates within the economy. The directive by the Banker's Committee in December 2006 that banks should clearly spell out upfront, the rates a prospective credit customer would be expected to pay, was very timely. The banks were also expected to make open all other sundry charges, which should not be more than 2% per annum in addition to the actual interest rate before drawdown. These transparent initiatives, according to the Committee, would ensure that a customer is not in doubt of whatever charges to be paid before concluding whether to take a loan or not. The downward adjustment of key ratios like the liquidity and cash reserve ratios will have salutary effect on the cost of funds of banks in the country. Continuous initiation of policies that will reduce credit failures in the economy and rigorous pursuit of deflationary policy stance by

the CBN will continue to encourage reduction in banks' cost of funds.

## **V.2 Summary and Conclusion**

The paper articulated the issues involved in the determination of cost of funds by banks in Nigeria and illustrated how cost of funds is computed. The normal framework for the computation of cost of funds by banks in Nigeria includes interest expense as a percentage of average volume of funds per annum, deposit insurance premium as a percentage of average volume of funds per annum and adjustment for cash reserve deposits, while some banks include overhead costs which were excluded by the Central Bank. Some of the variables considered in the determination of cost of funds included liquidity ratio, money supply and its growth rate, credit risk of borrowers, growth of bank credit, cash reserve requirements, loans-to-deposit ratio, prime lending rate, and real GDP growth rate. The strong effects of these factors were confirmed using econometric analysis. Estimation results showed that the significant predictor variables included cash reserve ratio, prime lending rate, real GDP growth rate, growth of bank credit, growth of money supply and liquidity ratio, making them issues of policy relevance. The paper revealed that high cost of funds is driven by increase in the demand for credit in the banking system. The mix of government's fiscal policy regime and monetary policy measures influences cost of funds and interest rates.

The margin of four percent allowed between minimum rediscount rate and lending rates by the interest rate policy of 1990 and the tripartite agreement of 2002 was exceeded by the banks for most periods, implying lack of compliance. In order to address this issue, the Bankers' Committee directed banks to spell out their lending rates clearly and make open all charges. It is expected that the higher deposit base for banks, resulting from bank consolidation, will encourage a decline in the banks' effective average cost of funds. In addition, cost of funds will decline if credit risk is reduced by discouraging loan default by borrowers through stringent laws; adequate infrastructure, especially in the area of energy supply, is provided by government to reduce cost of doing business in Nigeria; and stability in the national polity is guaranteed to minimize uncertainties. Finally, the continuous



initiation of policies that will reduce credit failures and rigorous pursuit of deflationary policy stance by the Central Bank of Nigeria will continue to encourage reduction in the cost of funds of banks in Nigeria.

## References

- Adam, Christopher, M (2001) “Exchange rates, volatility and the cost of capital”; Australian Graduate School Management.
- Agene, C. E. (1995), *The Principles of Modern Banking*; Gene Publications, Abuja and Lagos.
- Ajayi, Ibi, S (2001) “The Transmission Mechanism of Monetary Policy”; Paper Presented at the 3<sup>rd</sup> Seminar for the Press Conducted by Central Bank of Nigeria at Port Harcourt, 20<sup>th</sup> - 22<sup>nd</sup>, August).
- Amato, Jeffery D. and Laubach, Thomas (1999) “The Value of Interest Rate Smoothing: How the Private Sector Helps the Federal Reserve” in *Federal Reserve Bank of Kansas City Economic Review*; Vol. 84, Number 3; Third Quarter.
- Angbazo, Lazaraus and Saunders, Anthony (1997) “The Effect of TBTF Deregulation on Bank Cost of Funds”; *The Wharton School, Working Paper* 97-25.
- Bassett, Bill and Brady, Tom (2002) “What Drives the Persistent Competitiveness of Small Banks”? Federal Reserve System.
- Brock, Philip, I. (2000) “Financial Safety Net: Lessons from Chile” in the *World Bank Research Observer*, vol.15, Number 1, 2000.
- Central Bank of Nigeria (1991) BOFI Act No. 25 of 1991 (as amended).
- Central bank of Nigeria (1993) Annual Report and Statement of Accounts.
- Central Bank of Nigeria (1996) Monetary Policy Circular No. 30 of 1996 (as amended).
- Central Bank of Nigeria (1996) Statistical Bulletin, vol. 7

Central Bank of Nigeria (2002) “Report of the Special Technical Sub-Committee on Interest Rate Moderation”; 260<sup>th</sup> Meeting of the Bankers' Committee; April 30<sup>th</sup>.

Central Bank of Nigeria (2003) “The Supply and Demand for Loanable Funds” in *Contemporary Economic Policy Issues in Nigeria*; ed. O. J. Nnanna, et al.

Central Bank of Nigeria (2003) Statistical Bulletin, vol. 14

Central Bank of Nigeria (2003) Annual Report and Statement of Accounts.

Central Bank of Nigeria (2004) Monetary, Credit, Foreign Trade and Exchange Policy Guidelines for Fiscal 2004/2005; (*Monetary Policy Circular* No. 37).

Central Bank of Nigeria (2004) Annual Report and Statement of Accounts.

Central Bank of Nigeria (2004) Major Economic, Financial and Banking Indicators, September.

Central Bank of Nigeria (2005) Bank Analysis System (BAS)

Culbertson, J.M. (1957) “The Term Structure of Interest Rates”, *Quarterly Journal of Economics*, November, pp. 489-504.

Darnell, Jerome C (1980) “A Study of the Costs of Complying with Government Regulations”; Report Prepared for the United Bank of Denver.

Drury, Colin (2000) *Management and Cost Accounting*; Van Nostrand Reinhard (UK).

Eliehausen, Gregory (1998) “The Cost of Bank Regulation: A Review of the Evidence”; Board of Governors of the Federal Reserve System, Washington, DC. April.

Federal Government of Nigeria(1970) The Banking Act, 1960 (as amended in 1970),section 41 (1) (e)

Federal Government of Nigeria (1990) Nigeria Deposit Insurance Corporation Act, Chapter 301, Laws of the Federation of Nigeria 1990.

Fisher, Irving. (1930) "The Theory of Interest"; New York: Macmillan.

Grant Thornton (1992b) "Regulatory Burden: Phase II - Field Cost Studies"; Study Prepared for the Independent Bankers Association of America. September.

Harvey, Campbell, R. (1986) "Recovering Expectations of Consumption Growth from an Equilibrium Model of the Term Structure of Interest Rates". Chicago, Illinois.

Harvey, Campbell, R. (2003) Hypertextual Finance Glossary.

Hutchison, Dave (2005) "Value and Duration in Retail Financial Markets: The Economics of Bank Deposits"; Central Michigan University.

Keynes, J. M. (1936) "The General Theory of Employment, Interest and Money"; First Harbinger Edition.

Laeven, Luc (2002) "Bank Risk and Deposit Insurance"; in the *World Bank Economic Review*, vol. 16, No.1

Lucas, R. E. (1990) "Liquidity and Interest Rates" in *Journal of Economic Theory*, Vol. 50.

Mckinsey & Company (1992) "Estimating Bank Regulatory Cost Burdens"; Presentation to Federal Reserve Officials. May.

Modigliani, F. and Sutch, R. (1966) "Innovations in Interest Rate Policy", *American Economic Review*, May, pp. 178-97.

Mouck, Tom (1997) “Panglossian Capital Budgeting Theory in a Complex Adaptive World”, *The University of New Mexico, U.S.A., Working Paper*.

Ndekwe, C. Eddy (1993) “Domestic Credit and Monetary policy” in Nigerian Economy and Society: *Economic Policy and Development*, 1990–1991; edited by Phillips O. Adedotun & Ajakaiye, Olu D.

Obasanjo, Olusegun (2004) “keynote address at the Tenth Annual Conference of the Institute of Bankers of Nigeria”.

Oyedotun, Jaiye (2002) “Interest Rates Behaviour and its Relationship to Banks' Cost of Funds: A Practitioner's Perspective”; Paper Presented at the Fourth CBN Workshop for Finance Journalists and Business Editors, Lokoja, November 18–20.

Oxelheim, Lars (1985) “International Financial Market Fluctuations, Corporate Forecasting and Reporting Problems”, Chichester: John Wiley & Sons

Philbeam, Keith (1998) *Finance and Financial Markets*; Macmillan Press Ltd.; London

Ratnayake, Nimal (2004) “How Pricing Discipline can Help Business and Profitability of Banks”; Association of Professional Bankers, Sri Lanka.

Sanusi, J. O. (2002) Keynote Address at the 4<sup>th</sup> Central Bank of Nigeria (CBN) Seminar for Finance Correspondents and Business Editors; Confluence Beach Hotel, Lokoja.

Soludo, Charles (2004) “Briefing on Current Reforms in the Nigerian Banking Sector”.

Stiglitz, Joseph E. (2001) “Principles of Financial Regulation: A Dynamic Portfolio Approach”; in *The World Bank Research Observer*, Vol.16, No. 1.

## Appendix

**Table 2: Selected Economic Indicators, Monthly**

Year	Minimum	Treasury Bills	Inflation Rate (%)	Inter-bank Funds	Savings Rate (%)	Prime Lending	Cash Reserve Ratio (%)
	Rediscount Rate (%)	Rate (%)		Rates (%)		Rate (%)	
<b>2002</b>							
Jan	20.5	20.9	18.9	21.3	4.0	25.8	10.6
Feb	20.5	21.9	18.9	19.1	4.5	25.2	10.6
Mar	20.5	22.3	18.8	22.6	8.5	24.5	10.6
Apr	20.5	22.2	17.9	23.0	4.1	25.4	10.6
May	20.5	21.6	16.8	21.8	3.2	25.3	10.6
Jun	20.5	20.5	16.4	22.5	3.7	25.3	10.6
Jul	18.5	19.6	16.2	21.6	3.6	26.4	10.6
Aug	18.5	16.8	15.6	19.4	4.1	26.2	10.6
Sept	18.5	16.2	14.8	17.4	4.4	26.2	10.6
Oct	18.5	16.1	13.6	14.5	4.0	25.1	10.6
Nov	18.5	14.6	13.2	16.3	3.8	22.1	10.6
Dec	16.5	13.0	12.9	12.1	3.7	20.6	10.6
<b>2003</b>							
Jan	16.5	14.2	12.3	14.1	3.6	21.9	10.6
Feb	16.5	14.3	11.4	14.4	4.3	21.6	10.6
Mar	16.5	14.8	10.5	14.8	5.3	21.2	10.6
Apr	16.5	14.1	10.1	14.1	5.3	21.1	10.6
May	16.5	15.3	10.0	15.1	4.6	21.1	10.6
Jun	16.5	15.6	10.1	15.5	3.6	21.1	10.6
Jul	15.0	15.8	10.0	15.7	3.6	20.9	9.8
Aug	15.0	9.9	10.0	14.9	4.1	20.3	9.8
Sept	15.0	13.1	10.7	12.9	4.8	20.0	9.8
Oct	15.0	13.5	12.3	13.5	3.6	20.0	10.5
Nov	15.0	14.2	13.0	14.3	3.4	19.6	10.5
Dec	15.0	14.3	14.0	14.2	3.2	19.6	10.5

**Table 2 Cont'd: Selected Economic Indicators, Monthly**

Year	Minimum	Treasury Bills	Inflation Rate (%)	Inter-bank Funds	Savings Rate (%)	Prime Lending	Cash Reserve Ratio (%)
	Rediscount Rate (%)	Rate (%)		Rates (%)		Rate (%)	
<b>2004</b>							
Jan	15.0	14.5	15.0	12.1	3.5	19.5	7.8
Feb	15.0	13.3	16.5	13.8	4.2	19.6	7.8
Mar	15.0	14.1	17.8	14.6	5.7	19.5	7.8
Apr	15.0	14.5	18.5	15.9	3.1	19.5	8.6
May	15.0	13.7	19.4	15.5	3.5	19.4	8.6
Jun	15.0	13.5	19.4	15.0	3.3	19.2	8.6
Jul	15.0	14.4	19.1	15.2	4.7	19.0	8.8
Aug	15.0	14.5	19.1	12.9	4.6	18.8	8.8
Sept	15.0	13.9	18.2	11.9	4.4	19.0	8.8
Oct	15.0	10.6	17.1	10.3	4.4	18.9	9.1
Nov	15.0	12.6	16.1	12.7	4.4	18.9	9.1
Dec	15.0	12.6	15.0	12.1	4.4	18.9	9.1
<b>2005</b>							
Jan	15.0	12.9	14.0	10.6	4.4	18.9	9.5
Feb	13.0	11.5	12.9	9.6	4.4	18.4	9.5
Mar	13.0	10.8	12.5	10.7	4.2	18.2	9.5
Apr	13.0	10.1	12.6	8.0	4.0	18.2	9.5
May	13.0	6.3	12.5	5.3	4.1	18.1	9.5
Jun	13.0	4.6	12.9	5.5	4.0	17.8	10.0
Jul	13.0	3.3	14.2	4.7	3.8	17.8	10.0
Aug	13.0	2.8	15.5	3.9	3.6	17.5	10.0
Sept	13.0	5.5	16.8	5.5	3.4	17.6	10.0
Oct	13.0	2.4	17.4	8.2	3.3	17.5	10.0
Nov	13.0	2.4	17.8	16.4	3.4	17.6	10.0
Dec	13.0	11.5	17.9	7.0	3.3	17.8	10.0

**Table 2 Contd: Selected Economic Indicators, Monthly**

Year	Real GDP (%)	Money Supply (%)	Loans to Deposit	Liquidity Ratio	Growth of Bank	Banks' Effective Average
			Ratio (%)		Credit (%)	Cost of Funds (%)
<b>2002</b>						
Jan	3.5	2.4	62.8	52.5	3.3	30.1
Feb	3.5	7.6	62.8	52.5	2.5	27.5
Mar	3.5	8.1	62.8	52.5	18.4	29.6
Apr	3.5	9.1	62.8	52.5	20.0	34.0
May	3.5	9.6	62.8	52.5	23.4	33.3
Jun	3.5	14.1	62.8	52.5	25.6	28.8
Jul	3.5	14.2	62.8	52.5	32.1	28.0
Aug	3.5	16.1	62.8	52.5	33.2	28.6
Sept	3.5	22.0	62.8	52.5	39.0	29.5
Oct	3.5	28.6	62.8	52.5	37.0	27.6
Nov	3.5	22.4	62.8	52.5	24.4	27.6
Dec	3.5	21.6	62.8	52.5	56.6	124.0
<b>2003</b>						
Jan	10.2	9.2	62.8	52.5	16.6	25.8
Feb	10.2	11.2	62.8	52.5	23.8	23.3
Mar	10.2	20.0	56.3	52.4	16.8	23.9
Apr	10.2	22.9	56.3	52.4	12.4	22.2
May	10.2	16.2	56.3	52.4	17.0	23.3
Jun	10.2	32.8	57.5	50.7	30.5	22.8
Jul	10.2	22.1	57.5	50.7	40.9	24.8
Aug	10.2	23.3	57.5	50.7	41.4	24.1
Sept	10.2	23.9	63.6	50.8	32.3	25.6
Oct	10.2	29.5	63.6	50.8	46.8	25.7
Nov	10.2	33.3	63.6	50.8	43.0	23.5
Dec	10.2	24.1	70.0	49.7	29.1	26.3



**Table 2 Contd: Selected Economic Indicators, Monthly**

Year	Real GDP (%)	Money Supply (%)	Loans to Deposit Ratio (%)	Liquidity Ratio	Growth of Bank Credit (%)	Banks' Effective Average Cost of Funds (%)
<b>2004</b>						
Jan	6.5	-3.4	70.0	49.7	6.9	24.4
Feb	6.5	3.9	70.0	49.7	5.6	21.7
Mar	6.5	6.1	63.7	48.3	1.0	23.2
Apr	6.5	5.3	63.7	48.3	9.0	21.0
May	6.5	6.1	63.7	48.3	11.1	23.4
Jun	6.5	6.5	63.6	50.5	-0.1	22.0
Jul	6.5	6.9	63.6	50.5	-2.7	21.2
Aug	6.5	7.9	63.6	50.5	-1.1	60.2
Sept	6.5	8.6	74.4	51.1	4.8	43.3
Oct	6.5	12.4	74.4	51.1	-2.4	44.6
Nov	6.5	14.3	74.4	51.1	0.0	21.2
Dec	6.5	14.0	72.8	52.0	12.0	22.9
<b>2005</b>						
Jan	6.2	4.7	76.7	38.7	5.9	21.1
Feb	6.2	12.5	76.7	38.7	6.5	19.7
Mar	6.2	17.8	76.7	38.7	11.9	21.3
Apr	6.2	17.8	76.7	38.7	14.0	22.0
May	6.2	20.4	76.7	38.7	17.9	20.3
Jun	6.2	32.6	76.7	38.7	8.0	18.8
Jul	6.2	38.1	76.7	38.7	19.3	18.8
Aug	6.2	33.0	76.7	38.7	24.6	19.9
Sept	6.2	30.3	76.7	38.7	28.2	19.4
Oct	6.2	27.1	76.7	38.7	21.3	20.5
Nov	6.2	26.9	76.7	38.7	17.3	33.1
Dec	6.2	16.0	76.7	38.7	14.5	24.1

Source: (i) Central Bank of Nigeria Annual Report and Statement of Accounts, 2004  
(ii) Central Bank of Nigeria Statistical Bulletin, 1996 and 2003 Editions  
(iii) Central Bank of Nigeria: Major Economic, Financial and Banking Indicators, Sept. 2004  
(iv) Central Bank of Nigeria: Bank Analysis System (BAS)

**Table 3: Some Economic Indicators, Annual**

Year	Minimum	Treasury	Inflation	Inter-bank	Savings	Prime	Maximum	Manuf.
	Rediscount Rate (%)	Bills Rate (%)	Rate (%)	Funds Rates (%)	Rate (%)	Lending Rate (%)	Lending Rate (%)	Capacity Utilisation
1986	10.0	8.5	5.4	0.0	9.5	10.5	12.0	38.8
1987	12.8	11.8	10.2	0.0	14.0	17.5	19.2	40.4
1988	12.8	11.8	38.3	0.0	14.5	16.5	17.6	42.4
1989	18.5	17.5	40.9	0.0	16.4	26.8	28.6	43.8
1990	18.5	17.5	7.5	15.5	18.8	25.5	27.7	40.3
1991	14.5	15.0	13.0	19.5	14.2	20.1	20.8	42.0
1992	17.5	21.0	44.5	43.9	16.1	29.8	31.2	38.1
1993	26.0	26.9	57.2	57.5	16.7	36.1	40.0	37.2
1994	13.5	12.5	57.0	21.0	13.5	21.0	21.0	30.4
1995	13.5	12.5	72.8	21.0	12.6	20.2	20.8	29.3
1996	13.5	12.3	29.3	14.0	11.7	19.7	20.9	32.3
1997	13.5	12.0	8.5	17.3	4.8	13.5	23.3	30.4
1998	14.3	13.0	10.0	17.3	5.5	18.3	21.3	32.4
1999	18.0	17.0	6.6	23.4	5.3	21.3	27.2	34.6
2000	14.0	13.0	6.9	13.5	4.9	21.3	26.4	36.1
2001	20.5	20.5	16.5	24.6	5.0	23.7	23.9	39.6
2002	16.5	13.8	12.2	14.1	5.0	24.2	29.7	44.3
2003	15.0	14.5	23.8	25.8	4.2	20.5	22.4	45.6
2004	15.0	14.4	10.0	13.5	4.4	19.2	20.6	45.0
2005	13.0	7.0	11.6	7.9	3.8	17.9	19.5	45.9

**Table 3 Cont'd: Some Economic Indicators, Annual**

Year	Real GDP (%)	Money Supply (=N='M)	Loans to Deposit Ratio	Liquidity Ratio	Banking Sector credit (Private) '(=N='M)	Banking Sector Credit (Economy) '(=N='M)	Growth of Bank Credit	Banks' Capital Adequacy Ratio	Banks'Effective Average Cost of Funds
1986	2.5	24,592.7	83.2	36.4	17,365.0	36,820.3	12.7	-	-
1987	-0.6	29,994.6	72.9	46.5	25,476.1	46,926.4	27.4	-	-
1988	7.4	42,780.3	66.9	45.0	29,773.6	57,326.3	22.2	-	-
1989	7.7	46,222.9	80.4	40.3	30,942.8	49,259.1	-14.2	-	-
1990	13.0	64,902.7	66.5	44.3	36,631.0	57,674.9	17.1	-	-
1991	-0.8	86,152.5	59.8	38.6	45,325.2	83,823.7	45.3	-	-
1992	2.3	129,085.5	55.2	29.1	56,814.7	151,787.0	81.1	-	-
1993	1.3	198,479.2	42.9	42.2	68,082.8	257,541.0	69.7	-	-
1994	0.2	266,944.9	60.9	48.5	117,669.2	411,679.1	59.8	-	-
1995	2.2	318,763.5	73.3	33.1	175,787.6	445,203.9	8.1	-	-
1996	4.4	370,333.5	72.9	43.1	216,780.9	332,301.2	-25.4	-	-
1997	2.8	429,731.3	76.6	40.2	272,483.5	321,776.8	-3.2	-	-
1998	2.9	525,637.8	74.4	46.8	336,885.8	485,689.7	50.9	-	-
1999	0.4	699,733.7	54.6	61.0	452,411.1	632,010.1	30.1	19.7	38.3
2000	5.4	1,036,079.5	51.0	64.1	587,486.2	485,798.7	-23.1	16.6	28.1
2001	4.6	1,315,869.2	65.6	52.9	827,122.9	829,790.9	79.9	16.2	31.4
2002	3.5	1,599,494.6	66.5	58.2	938,271.2	1,268,270.3	64.6	18.1	124.0
2003	10.2	1,985,191.8	70.0	49.7	1,191,546.5	2,143,056.6	29.1	17.8	26.3
2004	6.5	2,263,587.9	72.8	52.0	1,507,885.2	1,784,177.2	12.0	14.8	22.9
2005	6.2	2,626,455.1	76.7	38.7	22,060,679.0	28,066,122.0	14.5	10.0	21.6

Source: (i) Central Bank of Nigeria Annual Report and Statement of Accounts, 2004  
(ii) Central Bank of Nigeria Statistical Bulletin, 1996 and 2003 Editions  
(iii) Central Bank of Nigeria: Major Economic, Financial and Banking Indicators, September 2004  
(iv) Central Bank of Nigeria: Bank Analysis System (BAS)